



# EC-R3588SPC FD

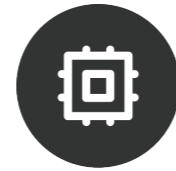
| Octa-Core 8K AI industrial Computer



T-CHIP INTELLIGENCE TECHNOLOGY

V1.0

# Product features



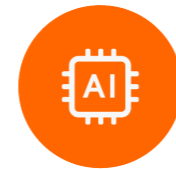
## 8-Core 64bit processor

8-Core 64bit processor RK3588S  
up to 2.4GHz  
8nm lithography process



## Super-large 32GB RAM

Up to 32GB RAM  
Support LPDDR4/LPDDR4x/LPDDR5



## GPU / VPU / NPU

OpenGL ES3.2/2.0, Vulkan1.1  
8K@60fps H.265/VP9 Decoding  
8K@30fps H.265/H.264 Encoding  
6TOPS NPU computing power



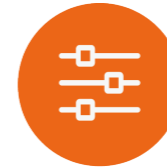
## Fanless design

Industrial-grade all-metal enclosure, a fanless design, efficient heat dissipation and stays completely silent



## Operating systems

Support Android and Ubuntu(desktop & Server) Operating systems



## A variety of interfaces

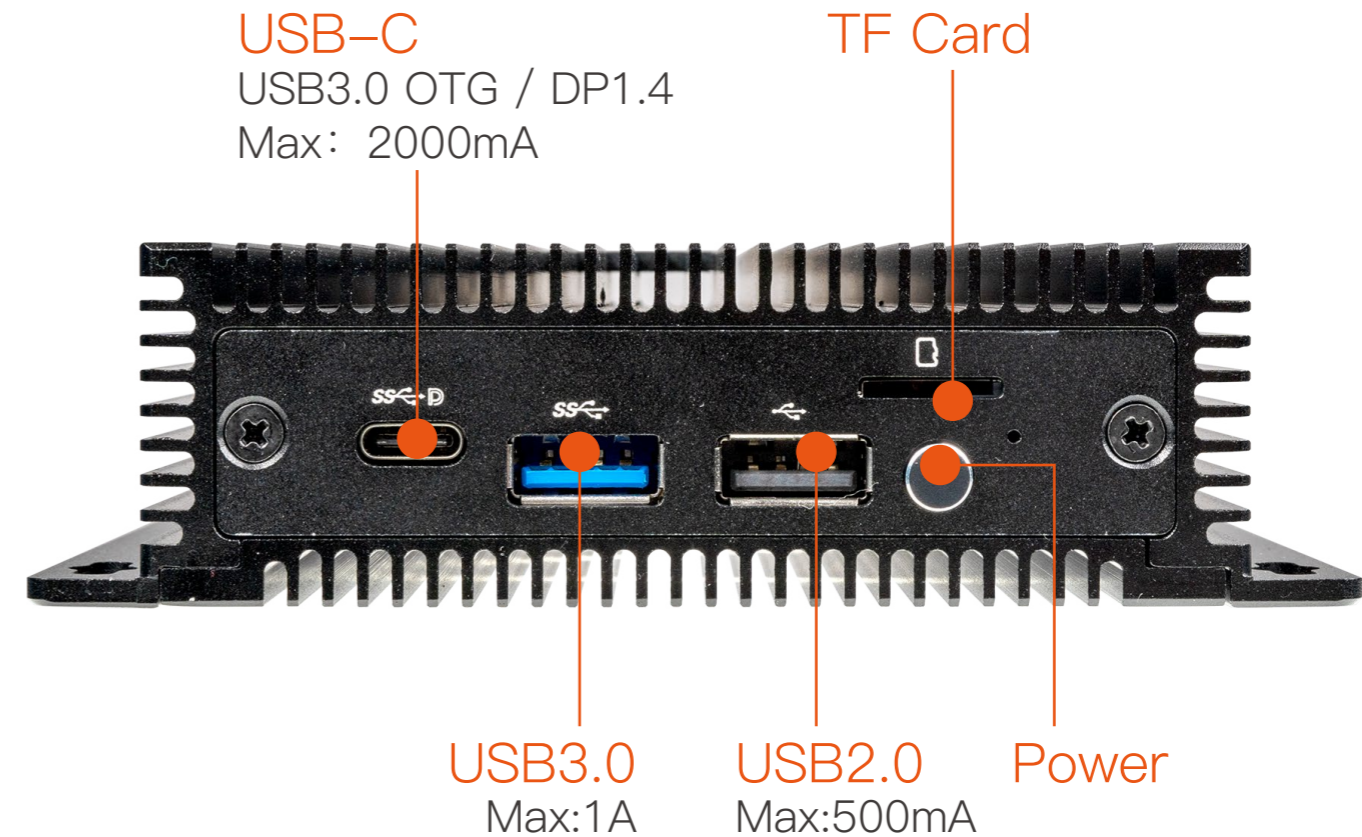
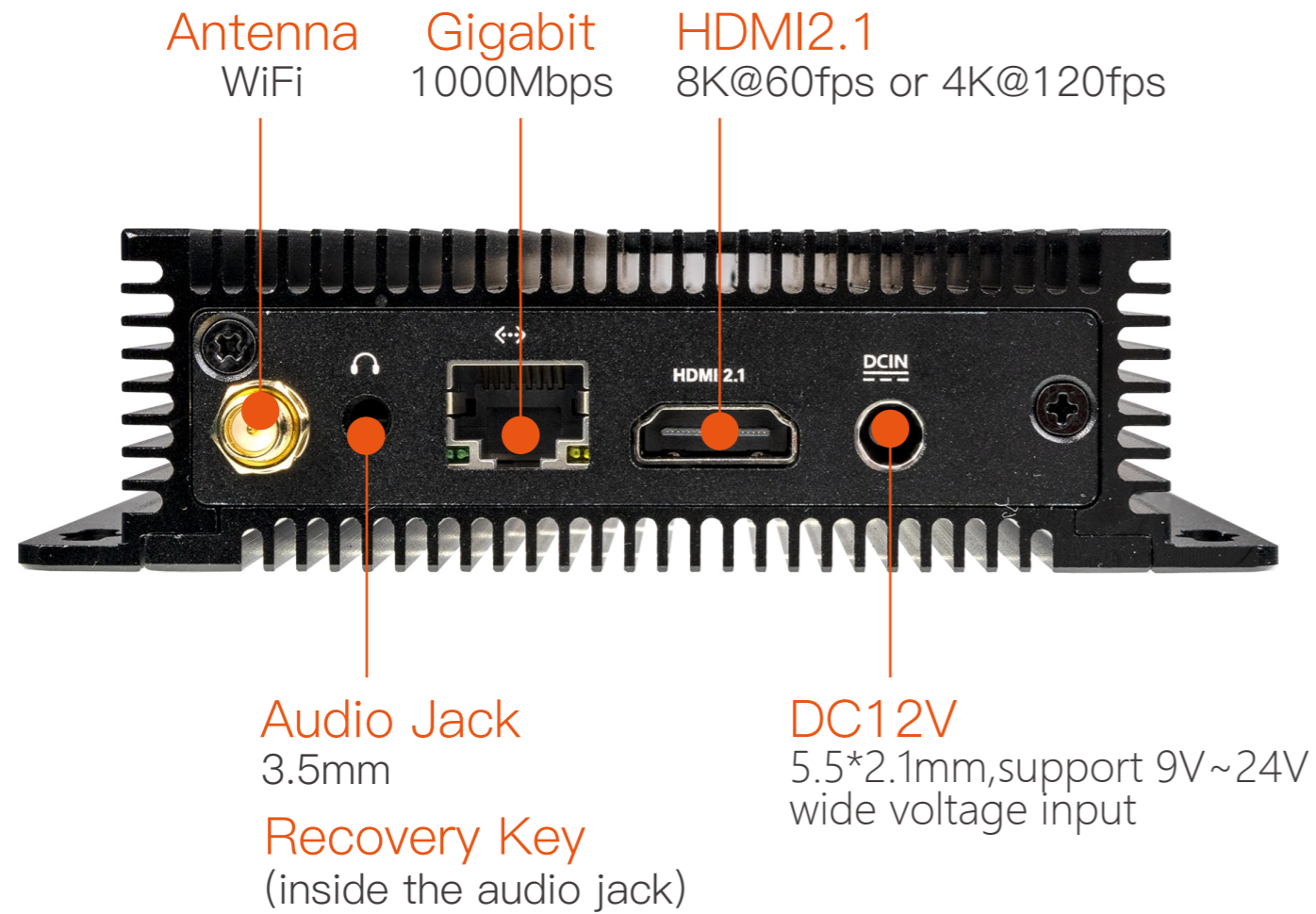
HDMI2.1, Gigabit(1000Mbps), USB3.0, USB2.0, USB-C(OTG /DP)

# Specifications

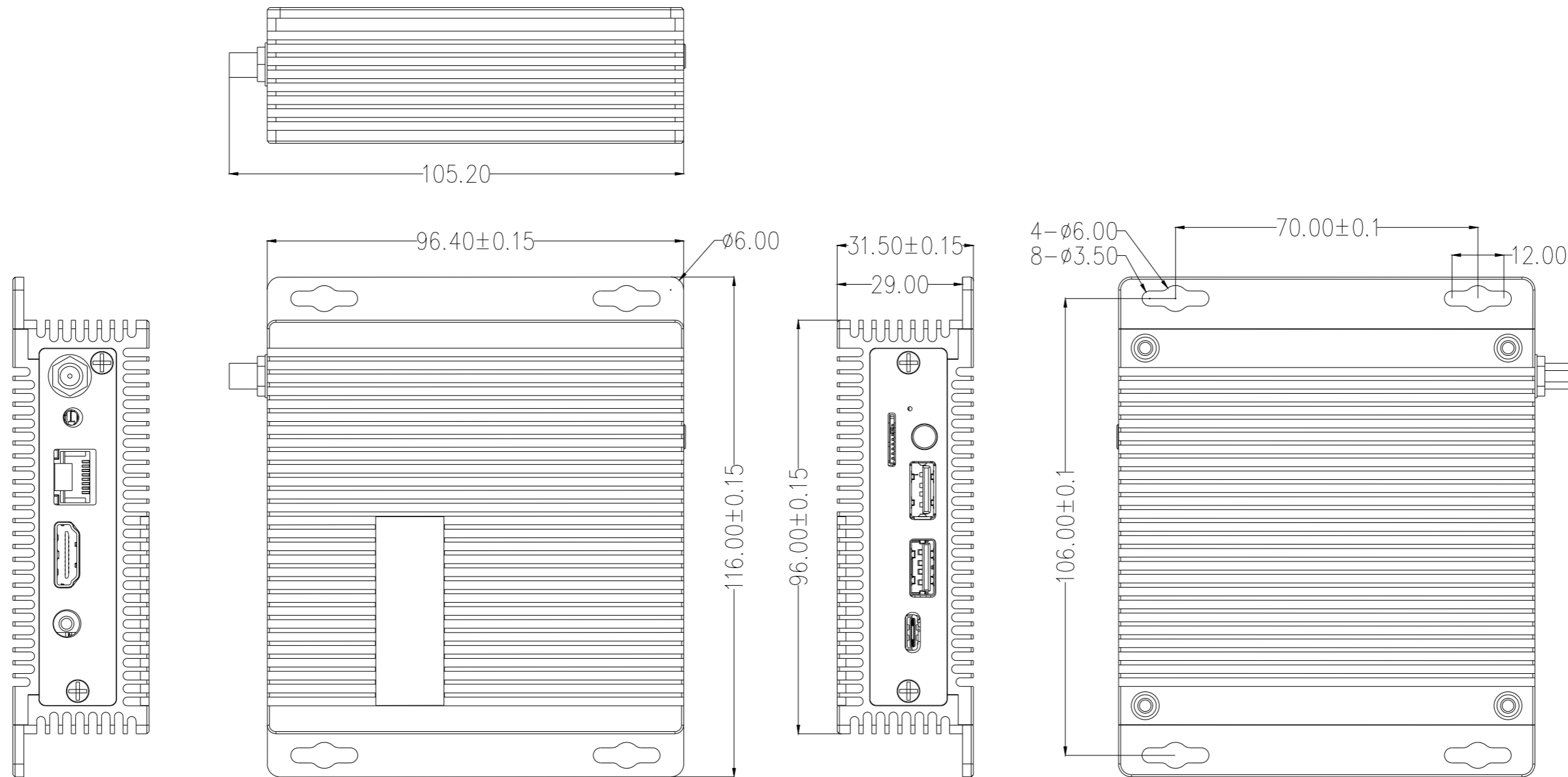


Specifications	
SOC	RK3588S
CPU	Octa-Core 64bit (4xCortex-A76+4xCortex-A55), 8nm lithography process, up to 2.4GHz
GPU	ARM Mali-G610 MP4 GPU, Support OpenGL ES3.2 / OpenCL 2.2 / Vulkan1.1, 450 GFLOPS
NPU	6 TOPS, Support INT4/INT8/INT16 mixed operation, Support framework switching of TensorFlow / MXNet / PyTorch / Caffe
Codecs	Decoding: 8K@60fps H.265/VP9/AVS2, 8K@30fps H.264 AVC/MVC, 4K@60fps AV1, 1080P@60fps MPEG-2/-1/VC-1/VP8 Encoding: 8K@30fps H.265 / H.264
RAM	4GB/8GB/16GB (up to 32GB) 64bit LPDDR4/LPDDR4x/LPDDR5
Storage	16GB/32GB/64GB/128GB eMMC
Storage Expansion	1 * TF Card
Ethernet	1 * Gigabit Ethernet (1000Mbps / RJ45)
Wireless	2.4G/5GHz Dual-band WiFi, 802.11 a/b/g/n/ac, Bluetooth 4.2
Video	1 * HDMI2.1 (8K@60fps或4K@120fps), 1 * DP1.4 (8K@30fps), Support dual screen output with different displays
Audio	1 * 3.5mm Audio jack (support Mic), 1 * HDMI2.1 Audio output, 1 * DP1.4 Audio output
USB	1 * USB3.0 (Max:1A), 1 * USB2.0 (Max:500mA), 1 * USB-C (USB3.0 OTG / DP1.4)(Max:2A)
Power	DC 12V (5.5*2.1mm, support 9V~24V wide voltage input)
OS	Android, Ubuntu (desktop and Server)
Dimension	116mm * 96.4mm * 31.5mm
Weight	≈ 0.43kg
Power Consumption	Idle: ≈0.48W(12V/40mA), Typical: ≈1.8W(12V150mA), Max: ≈12W(12V/1A)
Environment	Operating Temperature: -20°C ~ 60°C, Storage Temperature: -20°C ~ 70°C, Operating humidity: 10% ~ 90%RH (non-condensing)

# Interface description




# Dimension








## T-CHIP INTELLIGENCE TECHNOLOGY

---

 Contact Us  
(+86)18688117175

 E-mail  
global@t-firefly.com

 Website  
<https://en.t-firefly.com/>

 Address  
Room 2101, Hongyu Building, #57 Zhongshan 4Rd, East District,  
Zhongshan, Guangdong, China.