



EC-R3588SPC

| 8-Core AI Industrial Computer

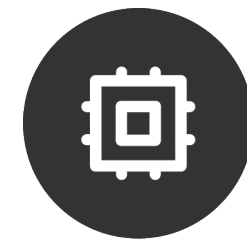
T-CHIP INTELLIGENCE TECHNOLOGY

V1.0



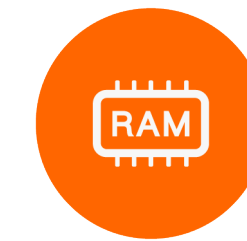


Product features



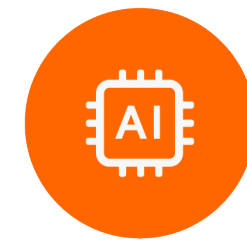
8-Core 64bit processor

8-Core 64bit processor RK3588S
8nm lithography process
up to 2.4GHz



Super-large 32GB RAM

Up to 32GB RAM
Support LPDDR4/LPDDR4x/LPDDR5



GPU / VPU / NPU

OpenGL ES3.2/2.0, Vulkan1.1
8K@60fps H.265/VP9 Decoding
8K@30fps H.265/H.264 Encoding
6TOPS NPU computing power



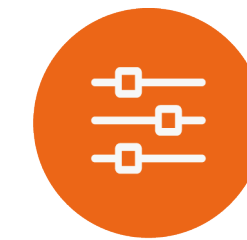
Network communication

1*1000Mbps, 1*100Mbps Ethernet
2.4G/5G Dual-band WiFi、BT4.2
Expandable 4G LTE



Operating systems

Support Android 12.0, Ubuntu(desktop & Server)



A variety of interfaces

HDMI2.1, USB3.0, USB2.0 , USB-C,
RS232, RS485, CAN, Relays

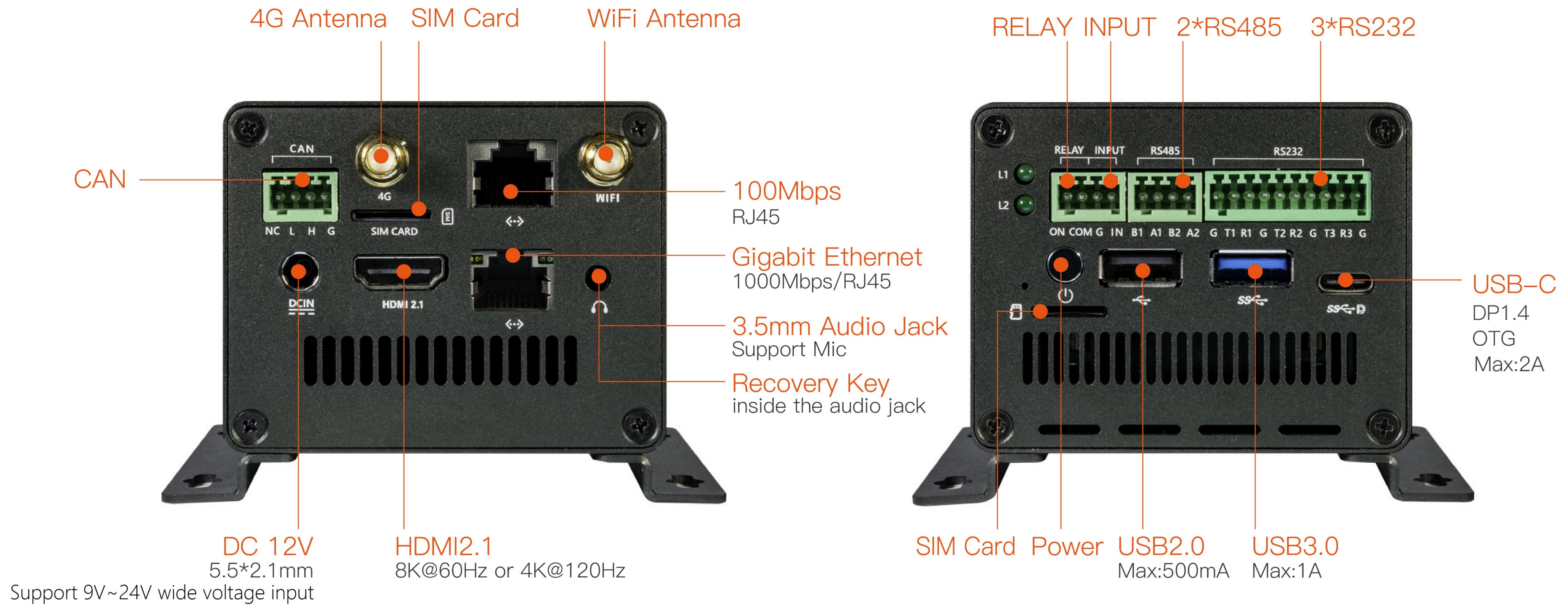


Specifications

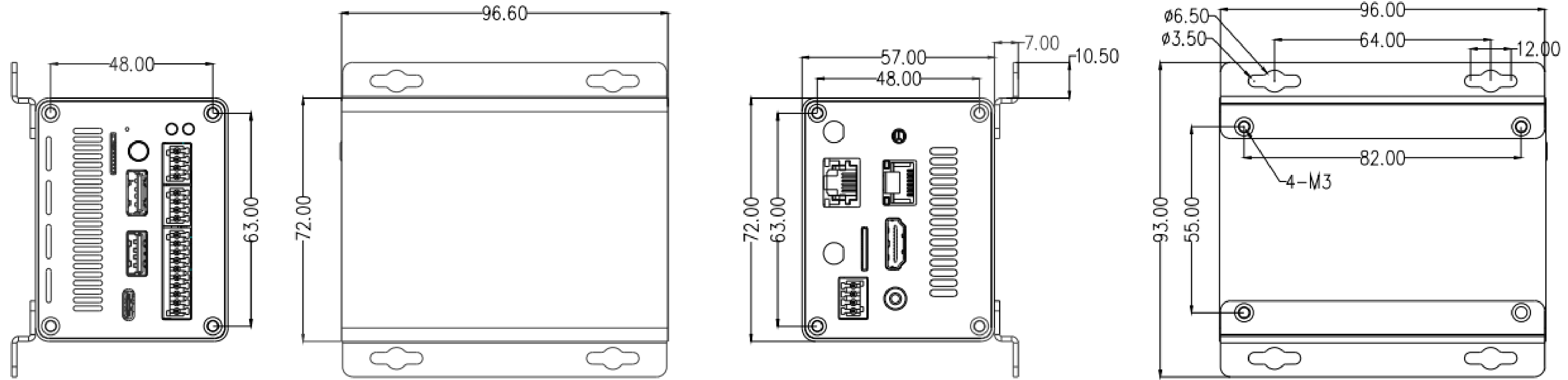
Specifications

SOC	RK3588S
CPU	8-64bit(4×Cortex-A76+4×Cortex-A55), 8nm lithography process, up to 2.4GHz
GPU	ARM Mali-G610 MP4 GPU, Support OpenGL ES3.2 / OpenCL 2.2 / Vulkan1.1, 450 GFLOPS
NPU	6 TOPS, Support INT4/INT8/INT16 mixed operation, Support framework switching of TensorFlow / MXNet / PyTorch / Caffe
Codecs	Decoding: 8K@60fps H.265/VP9/AVS2, 8K@30fps H.264 AVC/MVC, 4K@60fps AV1, 1080P@60fps MPEG-2/-1/VC-1/VP8 Encoding: 8K@30fps H.265 / H.264
RAM	4GB/8GB/16GB(up to 32GB)64bit LPDDR4/LPDDR4x/LPDDR5
Storage	16GB/32GB/64GB/128GB eMMC
Storage Expansion	1 * M.2 slot is for 2242 SATA3.0 SSD (default), compatible with 2242 PCIe2.0 NVMe SSD, 1 * TF Card
Ethernet	1 * GE(RJ45), 1 * 100Mbps(RJ45)
Wireless	2.4G/5GHz Dual-band WiFi, 802.11 a/b/g/n/ac, Bluetooth 4.2, Extended to 4G network
Video	1 * HDMI2.1(8K@60fps or 4K@120fps), 1 * DP1.4(8K@30fps), Support dual screen output with different displays
Audio	1 * 3.5mm Audio jack(support Mic), 1 * HDMI2.1 Audio output, 1 * DP1.4 Audio output
USB	1 * USB3.0(Max:1A), 1 * USB2.0(Max:500mA), 1 * USB-C(USB3.0 OTG / DP1.4)(Max:2A)
Other Interfaces	RS232, RS485, CAN, Relays
Power	DC 12V(5.5*2.1mm, support 9V~24V wide voltage input)
OS	Android 12.0, Ubuntu desktop and Server
Dimension	96.6 mm * 72mm * 64mm
Weight	≈0.45kg
Power Consumption	Idle: ≈0.42W(12V/35mA), Typical: ≈2.25W(12V/190mA), Max: ≈12W(12V/1000mA)
Environment	Operating Temperature: -20°C ~ 60°C, Storage Temperature: -20°C ~ 70°C, Operating humidity: 10% ~ 90%RH(non-condensing)

Interface description





Dimension






T-CHIP INTELLIGENCE TECHNOLOGY

 Contact Us
(+86)18688117175

 E-mail
global@t-firefly.com

 Website
www.t-firefly.com

 Address
Room 2101, Hongyu Building, #57 Zhongshan 4Rd, East District,
Zhongshan, Guangdong, China.