



EC-R3568PC

Quad-Core 64-Bit AI Embedded Computer

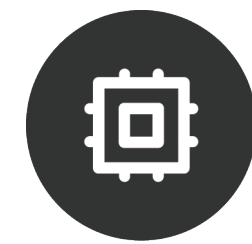
T-CHIP INTELLIGENCE TECHNOLOGY

V1.0



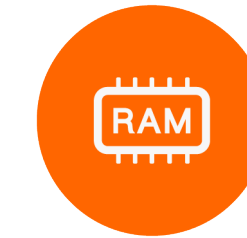


Product features



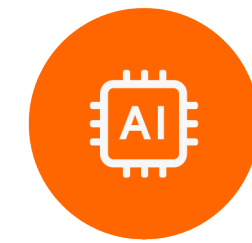
Quad-core 64-bit processor

Quad-core 64bit Cortex-A55 processor
up to 2.0GHz
22nm lithography process



8 G B l a r g e R A M

Up to 8GB RAM
meeting the requirements of running
large-memory products



G P U / V P U / N P U

OpenGL ES3.2/2.0, Vulkan1.1
4K@60fps H.265/VP9 video decoding
1080P@100fps H.265 video encoding
1TOPS NPU



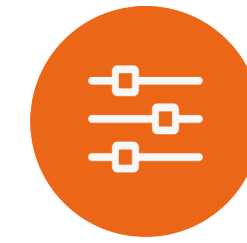
Dual Gigabit Ethernet

Dual 1000Mbps (RJ45)
2.4G/5G Dual-band WiFi, BT5.0
4G LTE module can be expanded



Supports various systems

Android、Ubuntu、Buildroot
It enables stable operation and customiz
ation for industries



A variety of interfaces

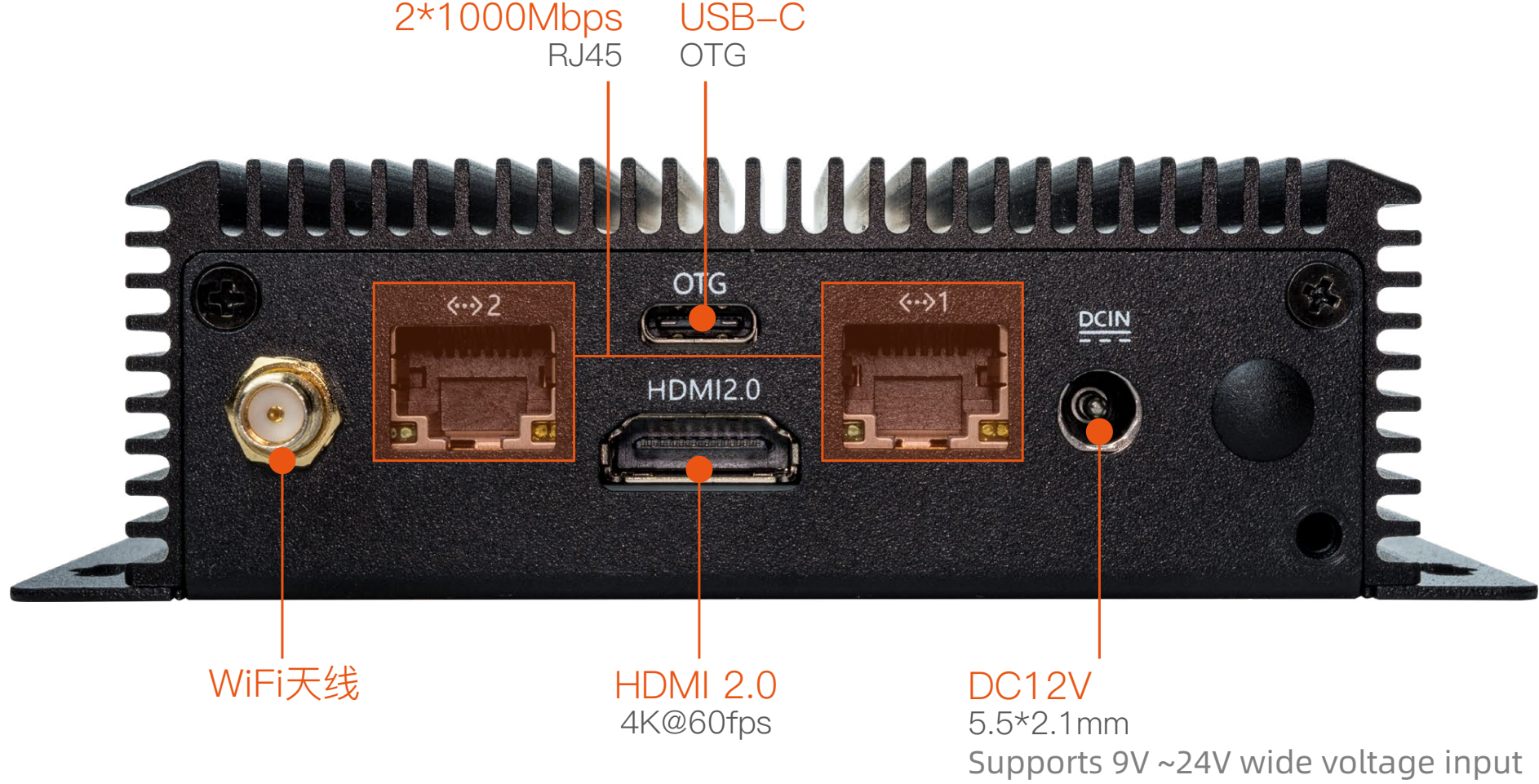
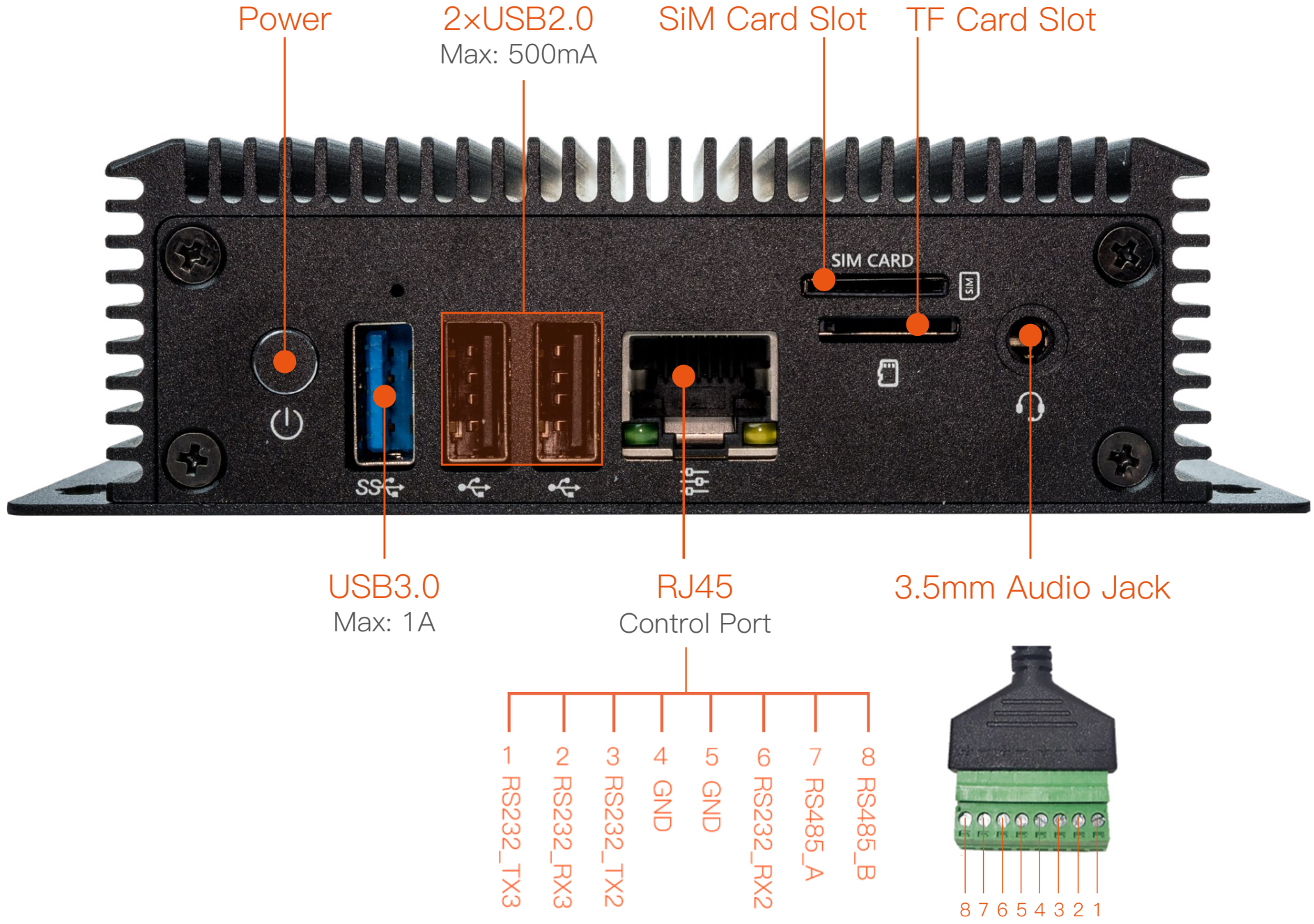
Control Port (RS232x2, RS485x1), HD
MI2.0, GE (RJ45), USB3.0, USB2.0, USB
-C (OTG)



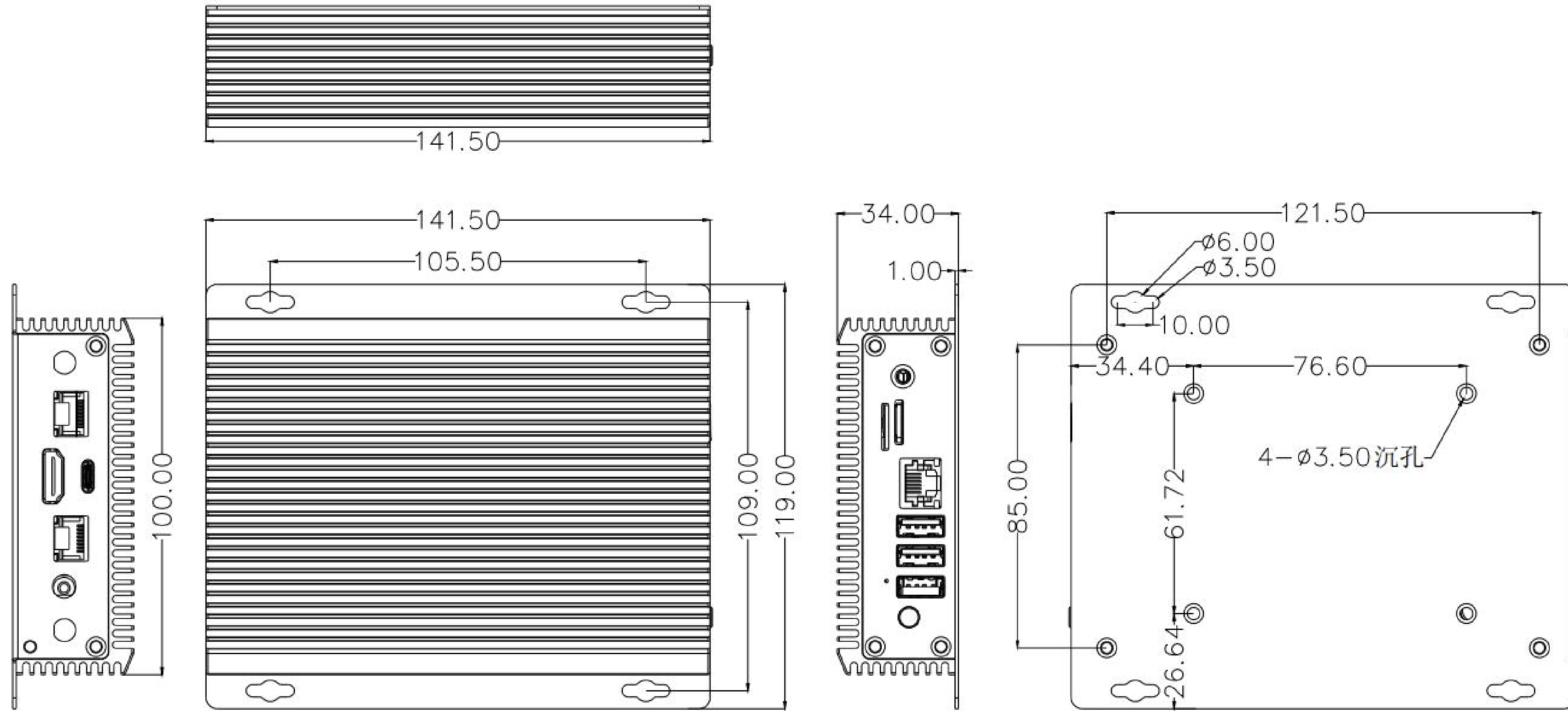
Specifications

Specifications	
SOC	RK3568
CPU	Quad-core 64-bit Cortex-A55 processor, 22nm lithography process, frequency up to 2.0GHz
GPU	ARM G52 2EE, Support OpenGL ES 1.1/2.0/3.2, OpenCL 2.0 and Vulkan 1.1, Built-in high-performance 2D acceleration hardware
NPU	1Tops@INT8 RKNN NPU AI accelerator, Support one-click switching of Caffe/TensorFlow/TFLite/ONNX/PyTorch/Keras/Darknet
VPU	4K@60fps H.265/H.264/VP9 video decoding, 1080P@60fps H.265/H.264 video encoding
RAM	2GB/4GB/8GB LPDDR4
Storage	16GB/32GB/64GB/128GB eMMC, 16MB SPI Flash
Storage Expansion	1*M.2 PCIe 3.0 (2242 / 2280 NVMe SSD), 1*SATA 3.0 (2.5inch, 7mm thickness SSD/HDD), 1*TF Card Slot
Ethernet	2*1000Mbps (RJ45)
Wireless	2.4G/5GHz Dual-band WiFi, 802.11 a/b/g/n/ac, Bluetooth 5.0, 4G LTE network communication can be expanded
Video Output	1*HDMI2.0 (4K@60Hz)
Audio	1 × HDMI audio output, 1 × 3.5mm Audio jack
USB	1*USB3.0 (Max:1A), 2*USB2.0 (Max:500mA), 1*USB-C (USB2.0 OTG)
Serial port	1*RJ45 Control Port (1*RS485 + 2*RS232)
Power	DC 12V (5.5*2.1mm, supports 9V~24V wide voltage input)
OS	Android 11.0, Ubuntu 18.04, Buildroot +QT, Station OS
Dimension	141.5mm*119mm*34mm
Weight	≈0.72kg
Appearance	Industrial-grade metal enclosure, all aluminium alloy top cover, matte black, and fanless design
Power Consumption	Idle: 0.3W (12V/25mA), Typical: 4.2W (12V/350mA), Max: 7.8W (12V/650mA)
Environment	Operating Temperature: -20°C- 60°C, Storage Temperature: -20°C- 70°C, Storage humidity: 10% ~ 90%RH (non-condensing)

Interface description



Dimension





T-CHIP INTELLIGENCE TECHNOLOGY



Contact Us
(+86)18688117175



E-mail
global@t-firefly.com



Website
www.t-firefly.com



Address
Room 2101, Hongyu Building, #57 Zhongshan 4Rd, East District,
Zhongshan, Guangdong, China.